

FITZGERALD SPECTOR, INC.

Manufacturer's Representative

Since 1994

Fitzgerald Spector, Inc. has been in business as a Manufacturers' Rep for 18 years. We represent specialty electrical products targeted towards OEM, industrial, and commercial markets in Eastern PA, Southern NJ, MD, and DE. Thanks to the organization's small size, we are able to take a personal approach to business and sales, priding ourselves on personable interactions, quick response times, and our extensive knowledge of the industry. This hands-on approach gives our clients peace of mind knowing they are in a business relationship with a company on which they can depend to find solutions to their ever-changing needs.



Allied Moulded's polycarbonate enclosures have features you can't find anywhere else!

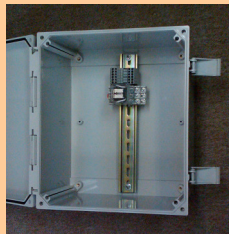
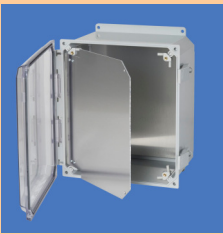
Industry-exclusive multi-mounting capability

Clear or solid cover offering good looks

Corrosion resistant 4X and non-conductive

Adjustable hinged front panel design

Molded-in back panel bosses and center bosses for mounting DIN rail



Niedax USA can meet all your cable management needs!



Wire Mesh Tray System

- Lightweight, flexible, and easy to install
- Cable ventilation is perfect
- Just need straight sections of tray, a universal splice kit, and a bolt cutter
- All kinds of fittings can be done onsite easily
- Is available in both galvanized and stainless steel



Surface Metal Raceway

- Designed for routing low voltage power circuits, data network, and control cables in industrial applications
- System consists of a base section with a snap-on cover, dividers, and a wide range of fittings
- It's easy to install, expand, and reconfigure
- Is available in both galvanized and stainless steel

REMKE

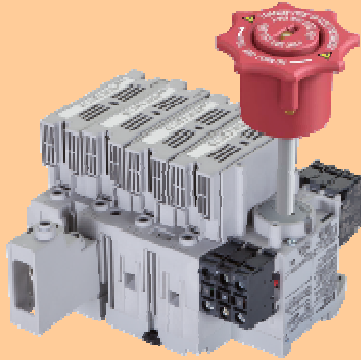


Remke's stainless steel cord connectors provide outstanding corrosion resistance!

Remke's line of type 304 stainless steel cord connectors provides exceptional tensile strength and the highest levels of durability in severely corrosive environments filled with saltwater, acids or chemicals.

Upon request, type 316 stainless steel is also available. Minimums may apply.

- All connectors include an embedded o-ring for enhanced sealing capabilities
- The combination tightening surface is a unique design that provides a large wrenching area for easy installation
- Optional wire mesh grips and stainless steel locknuts available



New series of L11 disconnect switches offers superior disconnect and short circuit protection!

Sprecher + Schuh's new series L11 30A and 60A disconnect switches provide exceptional disconnect and short circuit protection, while only requiring a small amount of panel space—an optimal combination. In addition, they are suitable for use in service entrance applications, and offer excellent short circuit protection for downstream applications.

- Can be operated at up to 600V
- Protects motors up to 30 HP (@460V)
- Can install on circuits capable of delivering up to 200,000A of short circuit fault current
- Fusible and non-fusible
- Fusible switches have removable IP30 fuse carriers, and optional LED blown-fuse indicators
- Switches meet IP20 for finger-safe wiring terminals and IP30 for touch-safe fuse carriers.
- Complies with UL98 service entrance requirements, and is NFPA 79 compliant



New series KTU7 molded case circuit breakers are ideal for non-motor applications!

Sprecher + Schuh's new series KTU7 molded case circuit breakers are ideal for non-motor applications, providing short circuit and over-current protection (thermal and magnetic). These UL489 listed circuit breakers have features and optional accessories that make them stand out from the crowd.

Features:

- Interrupt rating of 100kA (10A) and 65kA (30A) at 480Y/277V may allow higher overall panel short circuit rating
- Up to 6 times higher interrupting rating versus traditional miniature circuit breakers
- Smaller size saves panel space—just 45 x 102 x 85 mm
- Clear identification of trips and the source—short circuit or overload
- 100% rated up to 15A
- UL489 and CSA22.2 listed, IEC 60947-2 compliant

Accessories:

- Lockable operator knobs
- Motor and non-motor loads can be connected to a common compact bus bar saving space and providing a clean finished appearance
- Connection modules further reduce space, reduce the number of DIN rails needed, simplifies wiring and reduces installation labor cost

FITZGERALD SPECTOR INC

500 Office Center Dr
Suite 400
Fort Washington, PA 19034
267-513-1795 ph
www.fitzgeraldspectorinc.com